

For over 20 years Mercury lighting products have set the bar when it comes to high-performance in the finishing industry, That's because our products are extremely bright as well as incredibly energy efficient. We have a complete collection of industrial lighting applications including the popular Mercury Fluorescent Lighting and our new 5th generation LED Lighting.

Spray-Tech/Junair understands that lighting an industrial environment well is a challenging task. Since so many different, detailed operations are running inside an industrial facility at any given time, it is important to consider that each task receives the proper quality of light and that over time the light emitted continues to shine bright. Spray-Tech/Junair stands behind it's products, that's why our entire manufacturing plant is outfitted with Mercury fluorescent lighting.

Spray-Tech/Junair produces world class lighting fixtures for use across a wide variety of industrial applications. Our lighting fixtures are designed for locations where a rugged, sealed, light fixture is necessary. They are perfectly suited to industrial spraying locations but work excellently to create a beautiful, well-lit, environment throughout your entire facility or building for years to come.

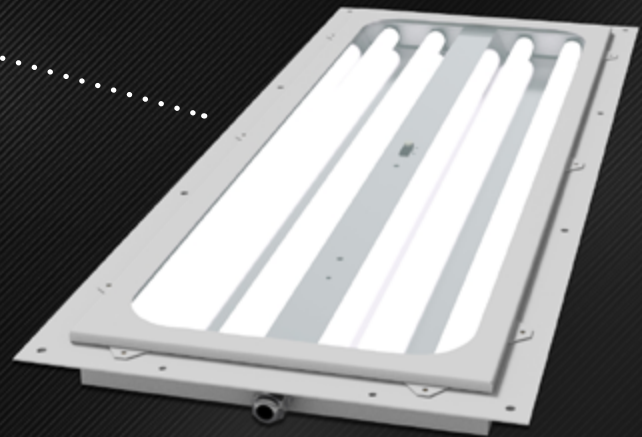
MERCURY FLUORESCENT LIGHTING

CLASS 1, DIVISION 2 / HAZARDOUS & WET LOCATION

Mercury Fluorescent light fixtures are designed for use in many hazardous and wet applications. They are suitable for mounting in areas that have deposits of readily combustible paint residues. They can be ceiling and wall mounted, and can be mounted on an angle between the ceiling and the wall. These lights are totally enclosed to prevent the escape of sparks and have the strength and rigidity to resist wear & tear in even the most abrasive environments.

Key Features:

- Rugged all-steel outer construction
- Tempered glass lens
- Powder coated finish with silicone seals
- Mirrored reflector for maximum projection & efficiency
- Threaded electrical conduit connections at each end
- Suitable for locations up to 120.2 °F (49 °C) with maximum operating temperature of 212 °F (100 °C)



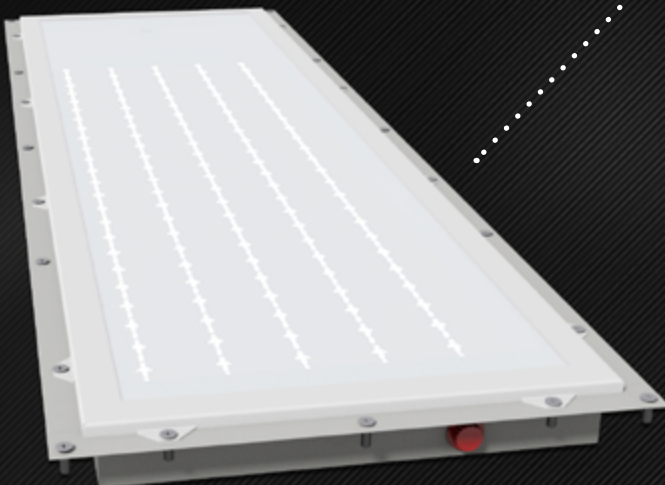
MERCURY LED LIGHT FIXTURES

5TH GENERATION / ENERGY-EFFICIENT LED

Spray-Tech/Junair and Mercury lead the way in developing cutting-edge LED light fixtures for use in a wide variety of applications. We've cut our teeth building LED light fixtures for use across small and large applications seeing exceptional results and and great feedback. Our LED light fixtures last longer than traditional fluorescent fixtures while also shining brighter and using less energy. Our unique, glass lens diffuses the emitted light so you get a consistent and bright glow across your entire work area with no dark areas and no sharp, obtrusive, shadows.

Key Features:

- Rugged all-steel outer construction
- Diffused, tempered glass lens
- Powder coated finish with silicone seals
- Threaded electrical conduit connections at each end
- Suitable anywhere you would use a fluorescent light fixture



SPRAY BOOTH UPGRADES:

Get the most performance out of your paint booth with high-end add-ons. Add an air make-up system to your booth to improve your productivity and get more work done faster. Add an exterior mixing room for safe paint storage and handling.



PAINT MIXING & STORAGE ROOMS:

The Spray Tech / Junair Paint Mixing Rooms provide a well-illuminated, clean ventilated work area for mixing and storing paint. These Paint Mixing Rooms are available with single wall (Non insulated) panels.

QADs: QUICK AIR DRYING SYSTEM:

Our patented QADs system helps circulate air through the booth with unmatched uniformity. Upgrading your booth with a QADs system can dramatically increase your productivity and lower operating costs. Ask about how you can get the fastest curing times in the industry with QADs.

AIR MAKE-UP UNITS:

Spray Tech / Junair has always been the leading equipment manufacturer when it comes to managing multi-environmental enclosures. Our climate control systems are outfitted with top-of-the-line heating and cooling equipment for all kinds of booths.



PRODUCING ONLY THE HIGHEST QUALITY FINISHING EQUIPMENT SINCE 1994

Est. 1994 and based in Rialto, CA, Spray-Tech/Junair is an American brand whose products have achieved international reach & relevance.

Spray-Tech/Junair produces some of the world's most efficient industrial finishing products that deliver exceptional results while leading the industry in eco-friendly design. Spray-Tech/Junair is dedicated to doing business without damaging the environment; that's why we utilize solar-panel technology to run our manufacturing facility.



REQUEST A QUOTE :



P. (800) 535 – 8196




F. (909) 419 – 7020



SALES@SPRAYTECH.COM

Want to see more? Follow us on:



 [LEARN MORE AT SPRAYTECH.COM](http://spraytech.com)